



## INTEGRATED PREVENTION ADVISORY GROUP

### PROGRAM

In accordance with the Army's "People First" priority and the Secretary of the Army's goal to reduce harmful behaviors across the service, the Army is further developing its prevention capabilities through the Integrated Prevention Advisory Group. Our people are our greatest strength, and leaders must foster an Army culture and command climate built on trust. More than 1,200 new I-PAG members will have expertise in subjects such as public health surveillance, health promotion, social science, behavioral science, implementation science, program evaluation, quantitative and qualitative methodologies, and statistical analytic techniques. Around 680 individuals will be posted at Headquarters, Department of the Army, Army Commands, Army Service Component Commands, Direct Reporting Units, Commanders at echelon (Brigade Combat Team/Brigade equivalent) and the Army Reserve. Approximately 325 I-PAG members will be assigned to the Army National Guard.

The Army plans to rollout the I-PAG workforce in phases over the Future Years Defense Program.

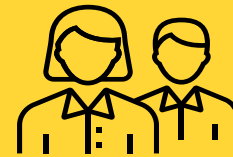
### CAPITAL STRUCTURE & INVESTMENT HIGHLIGHTS

The Army is introducing a public health systems approach to prevention that focuses on mitigating risk and strengthening protective measures to decrease stressors that can lead to unhealthy behaviors. The military is making a significant financial contribution to this new workforce to ensure that it is led by experts and informed by relevant data.

Contact the Directorate of Prevention, Resilience and Readiness at [usarmy.pentagon.hqda-dcs-g-9.list.sf-integrated-prevention@army.mil](mailto:usarmy.pentagon.hqda-dcs-g-9.list.sf-integrated-prevention@army.mil) for more information.

**THIS IS OUR ARMY.**

### QUICK FACTS



**EMPLOYEES:**  
**1,200**



[www.armyresilience.army.mil/IPAG](http://www.armyresilience.army.mil/IPAG)

The key activities to bolster protective factors that help prevent sexual assault, self-harm, domestic violence/intimate partner violence, child abuse and workplace violence will be integrated into the prevention workforce.

@ArmyResilience      
[www.armyresilience.army.mil](http://www.armyresilience.army.mil)

## PHASE I LOCATIONS

- Fort Cavazos (FORSCOM)
- Fort Riley (FORSCOM)
- Fort Sill (TRADOC)
- Hawaii (Schofield Barracks, 25th ID; USARPAC)
- South Korea (Camp Humphreys, Eighth Army; USARPAC)

## PHASE II LOCATIONS

- Fort Liberty (FORSCOM)
- Joint Base Lewis McCord (FORSCOM)
- Fort Bliss (FORSCOM)
- Fort Campbell (FORSCOM)
- Fort Carson (FORSCOM)
- Fort Stewart (FORSCOM)
- Fort Drum (FORSCOM)
- Fort Johnson (FORSCOM)
- Fort Irwin (FORSCOM)
- Fort Moore (TRADOC)
- Fort Leonard Wood (TRADOC)
- Fort Jackson (TRADOC)
- Fort Eisenhower (TRADOC)
- Fort Gregg-Adams (TRADOC)
- USAREC- Fort Knox (TRADOC)
- Fort Novosel (TRADOC)
- Fort Leavenworth (TRADOC)
- Fort Huachuca (TRADOC)
- Presidio of Monterey (TRADOC)
- Joint Base Langley Eustis (TRADOC)
- Grafenwoehr (USAREUR-AF)
- Stuttgart (USAREUR-AF)
- Wiesbaden (USAREUR-AF)
- Ansbach (USAREUR-AF)
- Kaiserslautern (USAREUR-AF)
- Chievres (USAREUR-AF)
- Vicenza (USAREUR-AF)
- Redstone Arsenal (AMC)
- Aberdeen Proving Ground (AMC)
- Detroit Arsenal (AMC)
- Rock Island Arsenal (AMC)
- Fort Wainwright (USARPAC)
- Camp Zama (USARPAC)
- Camp Okinawa (USARPAC)
- Joint Base Elmendorf-Richardson (USARPAC)
- Fort Meade (MDW)
- Fort Belvoir (MDW)
- Joint Base Myer-Henderson Hall (MDW)
- Army Futures Command
- ARCYBER
- Army Central Command
- Joint Base San Antonio (ARNORTH/MEDCOM)
- Carlisle Barracks (USAWC)
- US Military Academy
- INSCOM
- USASOC
- White Sands Missile Range (ATEC)